



Survival Rates and Clinical Characteristics of Young Patients with Waldenström Macroglobulinemia

Amaara Babwah, MS¹, Joshua Gustine, MPH², Kirsten Meid, MPH², Toni Dubeau, NP², Patricia Severns, NP², Steven P. Treon, MD, PhD² and Jorge J. Castillo, MD²

¹FIU Herbert Wertheim College of Medicine, Miami, FL ²Bing Center for Waldenström Macroglobulinemia, Dana-Farber Cancer Institute, Boston, MA



Introduction

Waldenström Macroglobulinemia (WM) is a rare and incurable lymphoplasmacytic lymphoma that is typically diagnosed at a median age of 69 years. Patients less than 50 years of age account for less than 10% of all WM cases. The clinical characteristics and survival function of these young patients have not been evaluated in detail. This descriptive retrospective study elucidates the clinical features and life expectancy of young patients with WM.

Methods

A retrospective analysis of patients diagnosed with WM before the age of 45 was conducted to elucidate differences in clinical characteristics between patients aged <40 and 40-45 years. Age, sex, hemoglobin, platelet count, serum IgM levels, beta-2-microglobulin levels, percentage of bone marrow involvement and indications to treat were used to compare both groups at initiation of treatment. Differences in clinical presentation between groups was evaluated by the Chi-square and Fisher's exact test when appropriate. Kaplan-Meier overall survival (OS) curves were generated for both groups and compared using the log-rank test. P-values <0.05 were considered significant.

Results

124 patients seen at this institution were diagnosed with WM before the age of 45, of which 32 (26%) were less than 40 years old and 92 (74%) were between 40 and 45.

Table 1. Selected characteristics of 124 patients diagnosed with WM before the age of 45

Patients' characteristics	Total (n=124)	Age <40 (n=32)	Age 40-45 (n=92)	p-value
Male sex	73 (59%)	18 (56%)	55 (60%)	0.73
Hb <11.5 g/dl	46 (37%)	13 (41%)	33 (36%)	0.63
Platelet <150 K/uL	17 (20%)	7 (26%)	10 (17%)	0.33
Beta-2-m >3	20 (29%)	5 (31%)	15 (28%)	0.79
Serum IgM >4000	48 (44%)	14 (50%)	34 (43%)	0.49
BM involvement>50%	59 (57%)	18 (62%)	41 (55%)	0.54
Time Dx to Tx <12 months	77 (72%)	19 (68%)	58 (75%)	0.44
Indication for treatment				
Hyperviscosity	43 (41%)	14 (48%)	29 (38%)	0.35
Anemia	51 (49%)	14 (48%)	37 (49%)	0.97
Neuropathy	20 (19%)	4 (14%)	16 (21%)	0.40
Extramedullary disease	8 (8%)	1 (3%)	7 (9%)	0.32
Constitutional symptoms	35 (33%)	10 (34%)	25 (33%)	0.88

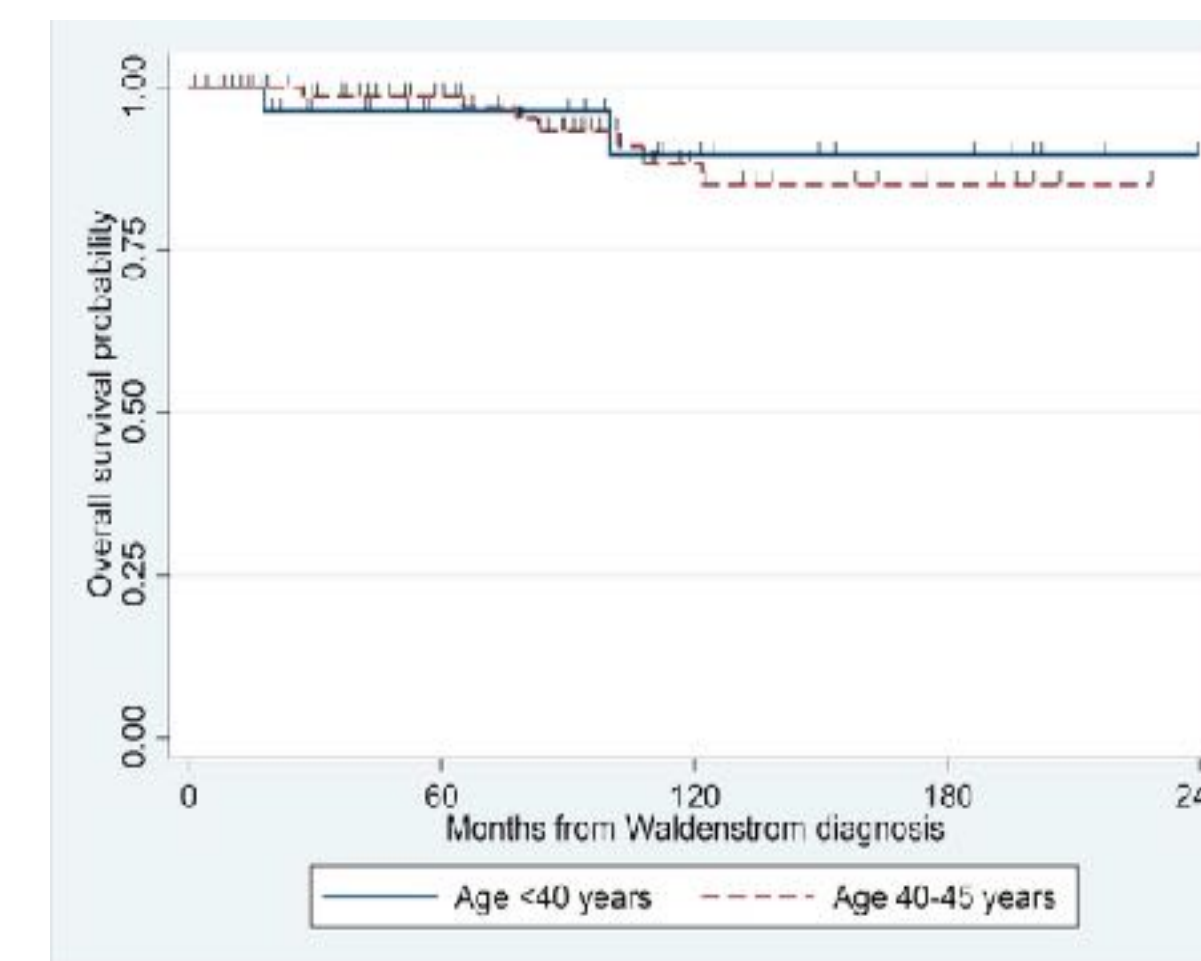
Results (II)

Among the 103 patients who have received WM-directed therapy, the indication for treatment included: symptomatic hyperviscosity (n=43; 41%), extramedullary disease (n=35; 33%), constitutional symptoms (n=35; 33%), anemia (n=20; 19%), and peripheral neuropathy (n=20; 19%). 48% of patients <40 experienced symptoms of hyperviscosity compared with 38% of patients ≥40.

No differences between patients aged <40 and 40-45 years were seen for treatment indication with regards to anemia, constitutional symptoms, neuropathy or extramedullary disease (p>0.05 for all comparisons).

The median follow-up for all patients was 94 months with a 5-year OS rate of 98%, 10-year OS rate of 89% and a 20-year OS rate of 86%. In patients <40 years, the 5-year OS rate was 96%, 10-year OS rate was 90% and the 20-year OS rate was also found to be 90%. For patients ≥40 years, 5-year OS rate was 99%, 10-year OS rate was 88% and the 20-year OS rate was 85% (See Figure 1).

Figure 1. Overall Survival of WM patients age <40 years and 40-45 years



Conclusions

48% of WM patients <40 years present with symptoms of hyperviscosity at initiation of first line therapy compared to 14% in older WM patients (Gustine Br J Haematol 2017).

It seems that younger patients have a greater life expectancy compared with the general population of patients with WM.

Disclosures: The authors have no conflicts of interest to disclose